

LSLLVSJ | LSLLESJ – DRUVA® PUR LINE REGULATOR

LINE REGULATOR | PURE LINE (STAINLESS STEEL) | 20 m³ SERIES | LOW PRESSURE RANGE

SINGLE STAGE | 6-PORT VERSION



This single-stage line pressure regulator is used in gas supply systems for pure, inert, flammable, oxidising, corrosive and / or toxic gases and their mixtures up to gas purity 6.0.

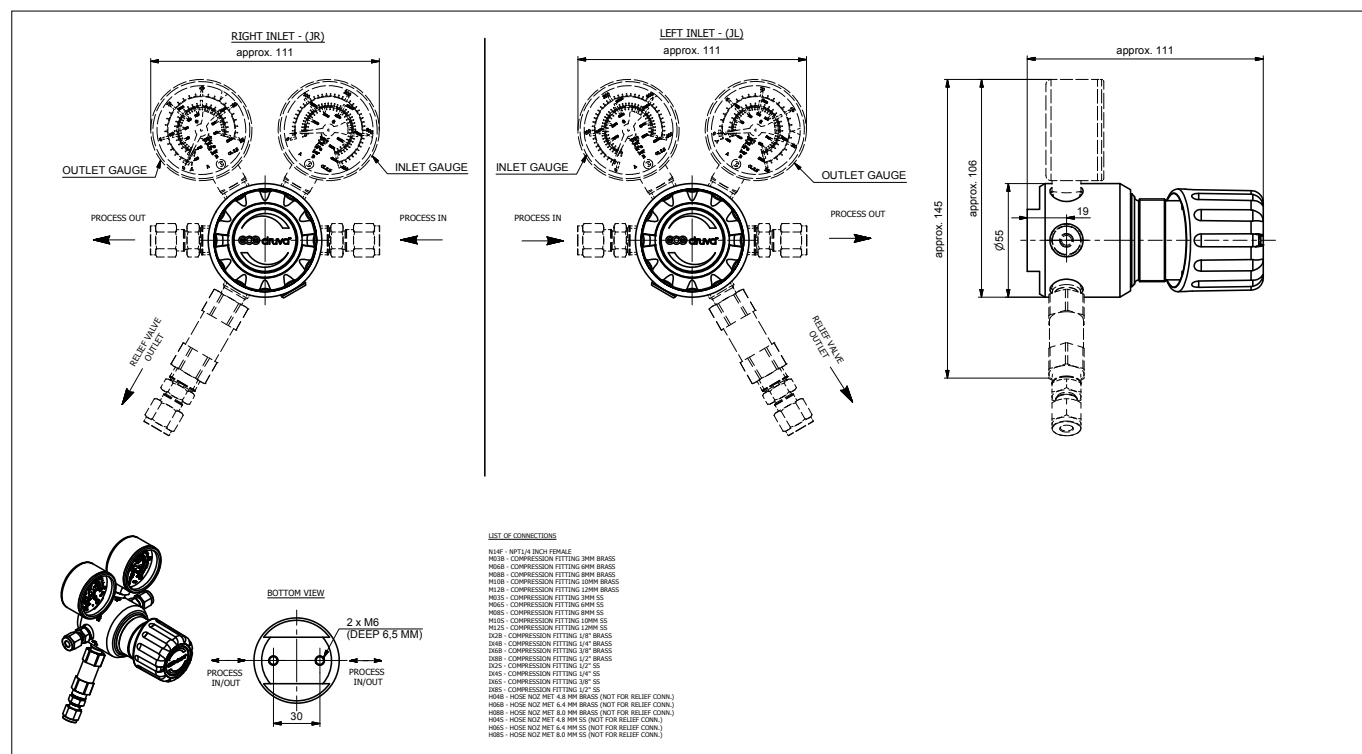


SPECIAL FEATURES:

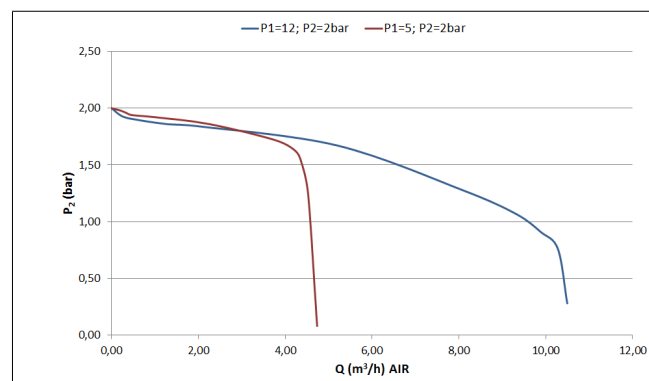
- > Hastelloy diaphragm tightening system to atmosphere
- > Compact design
- > Excellent pressure adjustment
- > Designed and approved regarding ISO 7291
- > Relief valve in delivery pressure side available
- > Electrostatic chargeability test
 - Fulfills requirements according to ISO 80079-36; IEC TS 60079-32-1 and German TRGS 727
 - Usable in EX- areas zones 1 and 2 for gases with explosion risk group I; IIA; IIB; IIC

| TECHNICAL DATA | |
|---|---|
| Working temperature: | -20 °C to +60 °C |
| Inlet / outlet ports: | See technical drawing |
| Leakage rate seat: | <5x10 ⁻⁶ mbar l/s (Helium) |
| Leakage rate outside: | <1x10 ⁻⁹ mbar l/s (Helium) |
| Filter: | 1x for inlet 1x for each outlet |
| Weight: | 1,39 kg |
| Flow nominal: | 3 m³/h |
| Material gas wettet parts: | |
| Regulator body: | Stainless Steel |
| Regulator diaphragm: | Hastelloy |
| Regulator seat: | |
| LSLLVSJ-Version | FKM |
| LSLLESJ-Version | EPDM |
| Relief valve seat: | |
| LSLLVSJ-Version | FKM |
| LSLLESJ-Version | EPDM |
| Regulator poppet: | Stainless Steel |
| Pressure rates line regulator: | |
| Max. inlet pressure | 12 bar |
| Delivery pressure | 1 / 2 bar |
| Pressure gauges rates (pressure rates): | -1 bar till 1,5 bar (1 bar) / -1 till 5 bar (2 bar) |
| Contact gauges available – please contact us | |
| Cracking pressure relief valves: | 1,54 bar (1 bar)/ 3,08 bar (2 bar) |
| Test in production: | Pressure test with Helium of each item |
| | Seat leakage test with Helium of each item |
| | Helium leak test of each regulator against atmosphere |
| | Test of functionality of each item |
| Approvals during development: | Type test in accordance with ISO 7291 |
| | Additional life cycle test |
| | Electrostatic chargeability test |
| | <ul style="list-style-type: none"> • Fulfill requirements according ISO 80079-36; IEC TS 60079-32-1 and German TRGS 727 • Usable in EX-areas zones 1 and 2 for gases with explosion risk group I; IIA; IIB; IIC |

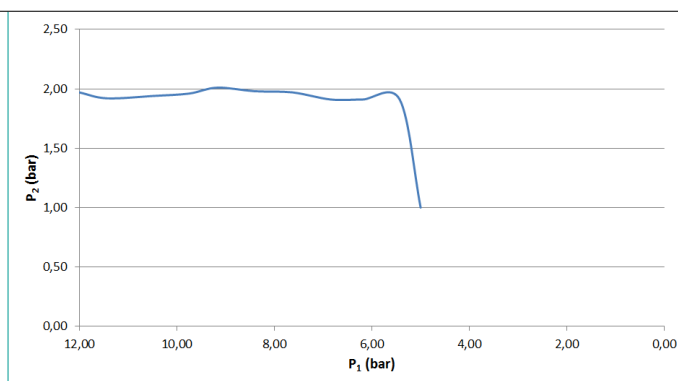
TECHNICAL DRAWING:



FLOW CURVES:



DYNAMIC EXPANSION CURVES:



ORDER CODE:

Example Line Regulator | PUR Linie | Stainless Steel | Low Flow | Low Pressure | Single Stage | 6-Port Version

| LSLLVSJ | R | D1 | AX | O0 | BT | N14F (1/4" NPT female) | N14F (1/4" NPT female) | O0 | O001 |
|---------------|-----------|----------------|------------------------------|----------------------------|----------------------|---------------------------|----------------------------|---|-------------------------|
| | Porting | Inlet pressure | Outlet pressure | Inlet gauge | Outlet gauge | Inlet connection | Outlet connection | Safety device | Relief valve connection |
| R Inlet right | D1 12 bar | AY 1 bar | O0 Without 1/4" NPT female | O0 Without 1/4" NPT female | possible connections | possible connections | O0 Without 1/4" NPT female | O001 – if no safety device is chosen possible connection if safety device RV is choosen see technical drawing | |
| L Inlet left | | AX 2 bar | O1 Without (plugged) | O1 Without (plugged) | | | O1 Without (plugged) | | |
| | | | BT Bourdon Tube gauge | BT Bourdon Tube gauge | | | RV Relief valve | | |
| | | | I1 Inductiv contact gauge I1 | | | | | | |
| | | | R5 Reed contact gauge R5 | | | | | | |
| | | | | | | | | | |

Order code (as described above) without special characters or spaces! Complete Order Code **L5LLVSJRD1AX00BTN14FN14F000001**



Link to online product configurator